



CHÂTEAU

BEACH RESIDENCES

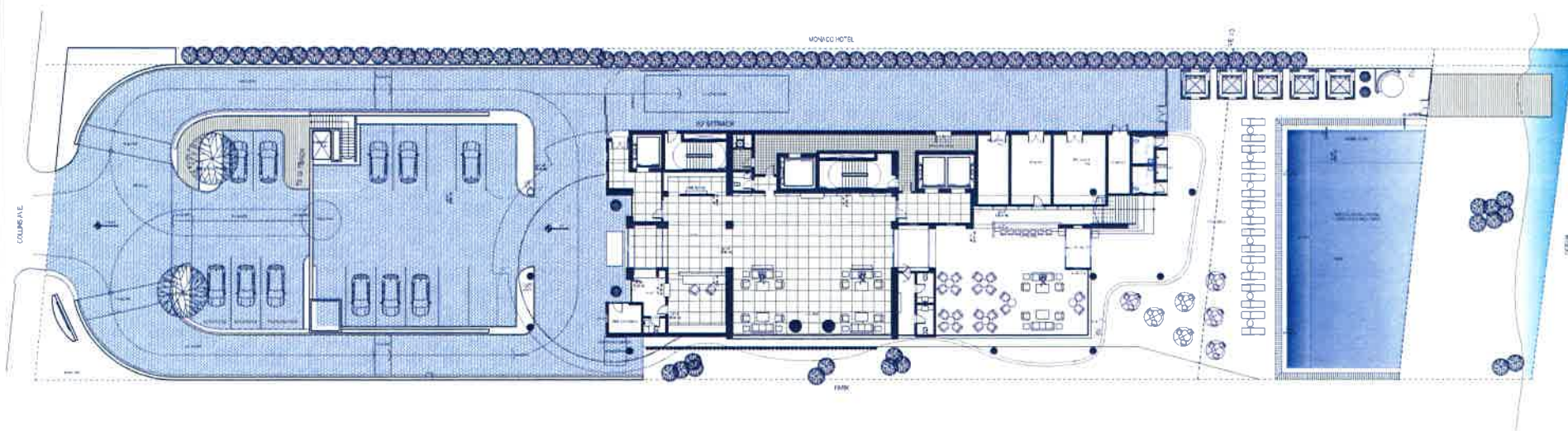
SUNNY ISLES





CHÂTEAU

BEACH RESIDENCES
SUNNY ISLES



GROUND FLOOR

REV. 27 | 03 | 12

All dimensions are approximate and all floor plans and development plans are subject to change by the developer without notice. Stated dimensions are measured to the exterior boundaries of the exterior walls and the centerline of interior demising walls and in fact vary from the dimensions that would be determined by using the description and definition of the "Unit" set forth in the Declaration (which generally only includes the interior air space between the perimeter walls and excludes interior structural components). The seller reserves the absolute right, in its sole judgment and discretion, to substitute appliances, materials, fixtures, and equipment of equal or greater quality or value for those specified.

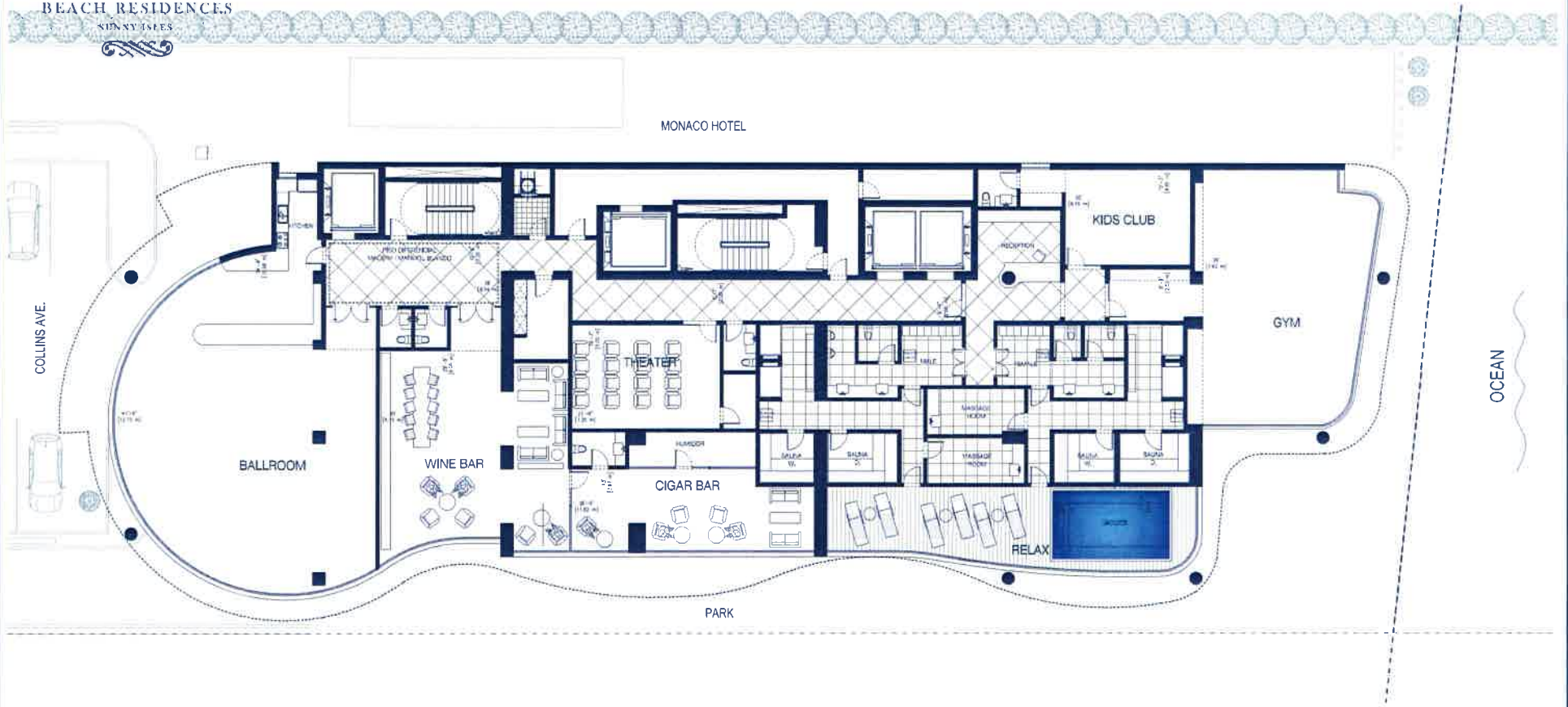


CHÂTEAU BEACH RESIDENCES

NINETY SEVEN



MONACO HOTEL



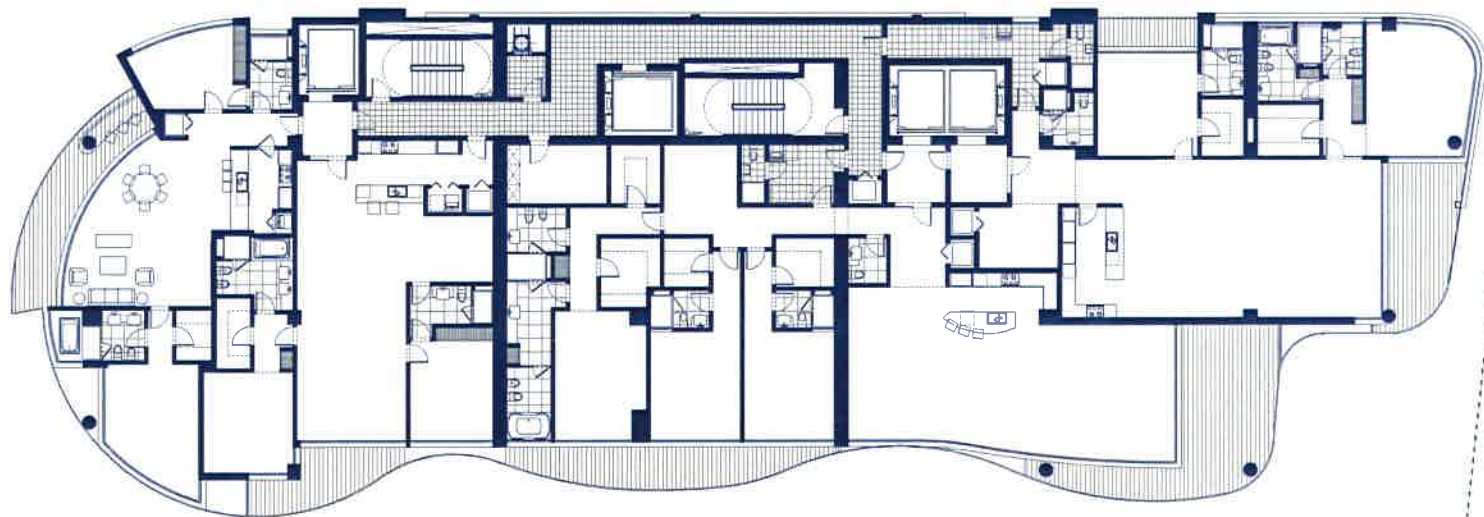
2ND LEVEL

REV. 27 | 03 | 12

All dimensions are approximate and all floor plans and development plans are subject to change by the developer without notice. Stated dimensions are measured to the exterior boundaries of the exterior walls and the centerline of interior demising walls and in fact vary from the dimensions that would be determined by using the description and definition of the "Unit" set forth in the Declaration (which generally only includes the interior air space between the perimeter walls and excludes interior structural components). The seller reserves the absolute right, in its sole judgment and discretion, to substitute appliances, materials, fixtures, and equipment of equal or greater quality or value for those specified.



CHÂTEAU
BEACH RESIDENCES
SUNNY ISLES



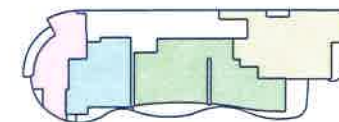
LEVEL
5° TO 11°

REV. 27 | 03 | 12



Monaco Hotel

Collins Ave.



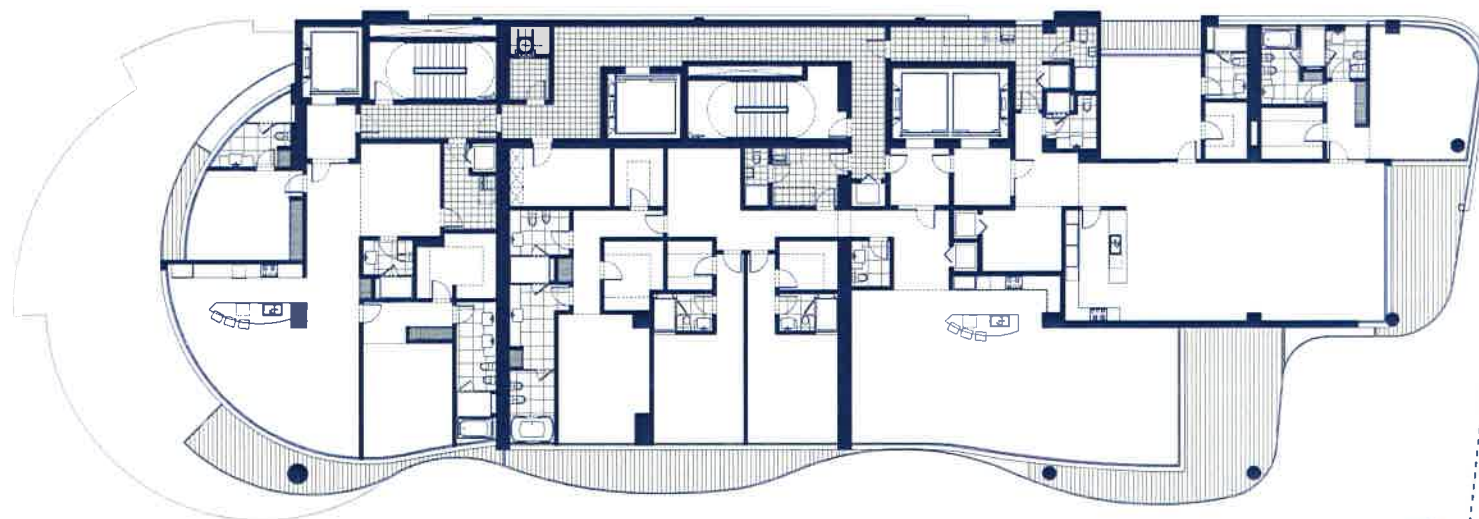
Park

Ocean

All dimensions are approximate and all floor plans and development plans are subject to change by the developer without notice. Stated dimensions are measured to the exterior boundaries of the exterior walls and the centerline of interior demising walls and in fact vary from the dimensions that would be determined by using the description and definition of the "Unit" set forth in the Declaration (which generally only includes the interior air space between the perimeter walls and excludes interior structural components). The seller reserves the absolute right, in its sole judgment and discretion, to substitute appliances, materials, fixtures, and equipment of equal or greater quality or value for those specified.



CHÂTEAU
BEACH RESIDENCES
SUNNY ISLES



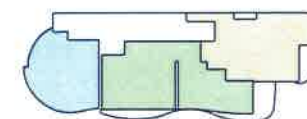
LEVEL
14° TO 22° 23
(NOT INCLUDING 13°)

REV. 27 | 03 | 12



Monaco Hotel

Collins Ave.



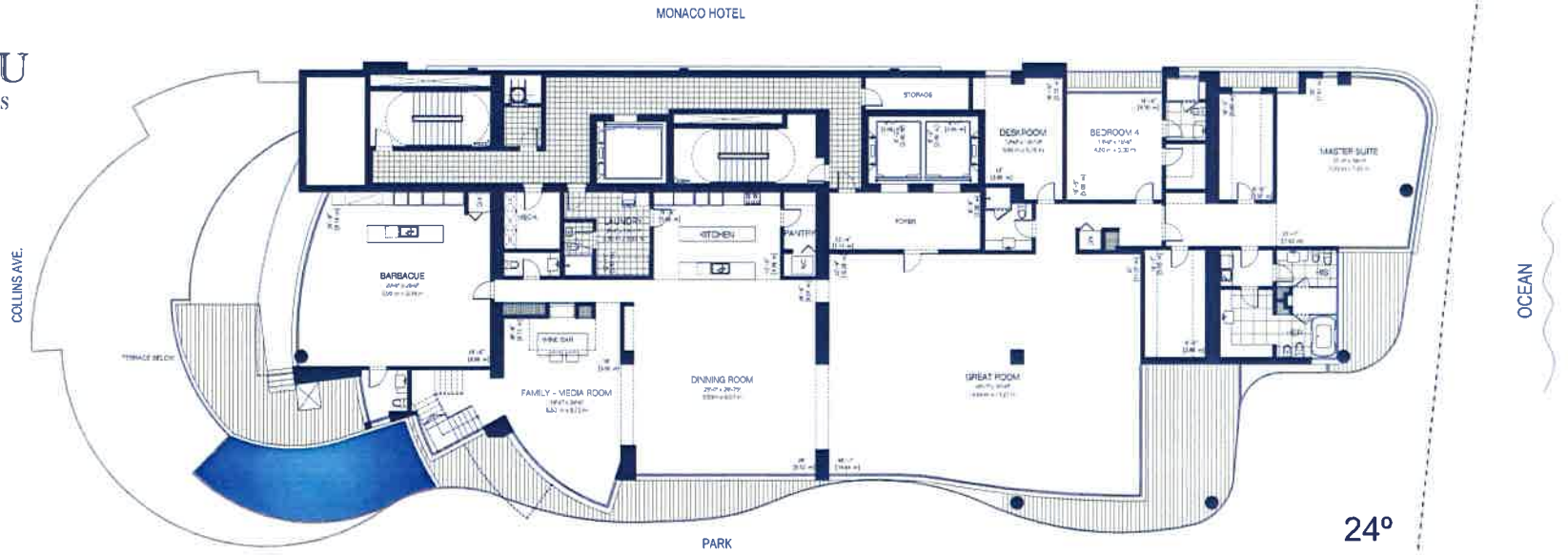
Park

Ocean

All dimensions are approximate and all floor plans and development plans are subject to change by the developer without notice. Stated dimensions are measured to the exterior boundaries of the exterior walls and the centerline of interior demising walls and in fact vary from the dimensions that would be determined by using the description and definition of the "Unit" set forth in the Declaration (which generally only includes the interior air space between the perimeter walls and excludes interior structural components). The seller reserves the absolute right, in its sole judgment and discretion, to substitute appliances, materials, fixtures, and equipment of equal or greater quality or value for those specified.



CHÂTEAU BEACH RESIDENCES SUNNY ISLES



RESIDENCE COLLECTION SKY VILLA LEVEL 24° & 25°

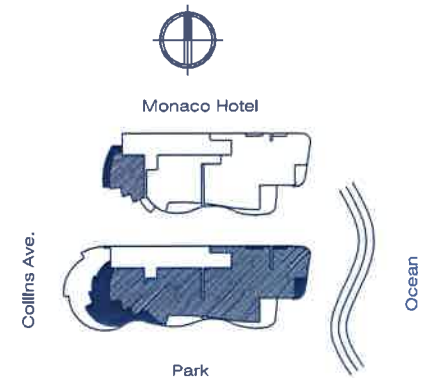
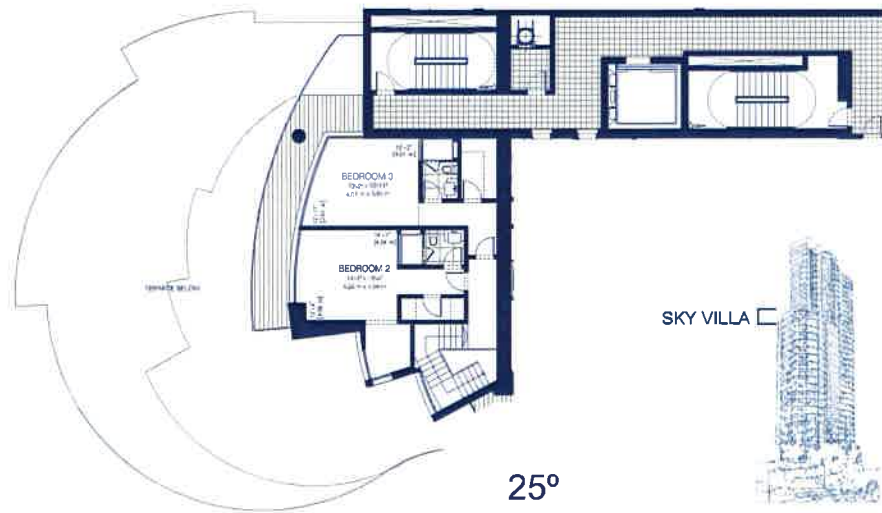
4 BEDROOMS / 6 + (3) $\frac{1}{2}$ BATH

Interior: 8,557 SF 795 M²

Exterior: 2,292 SF 213 M²

Total: 10,849 SF 1,008 M²

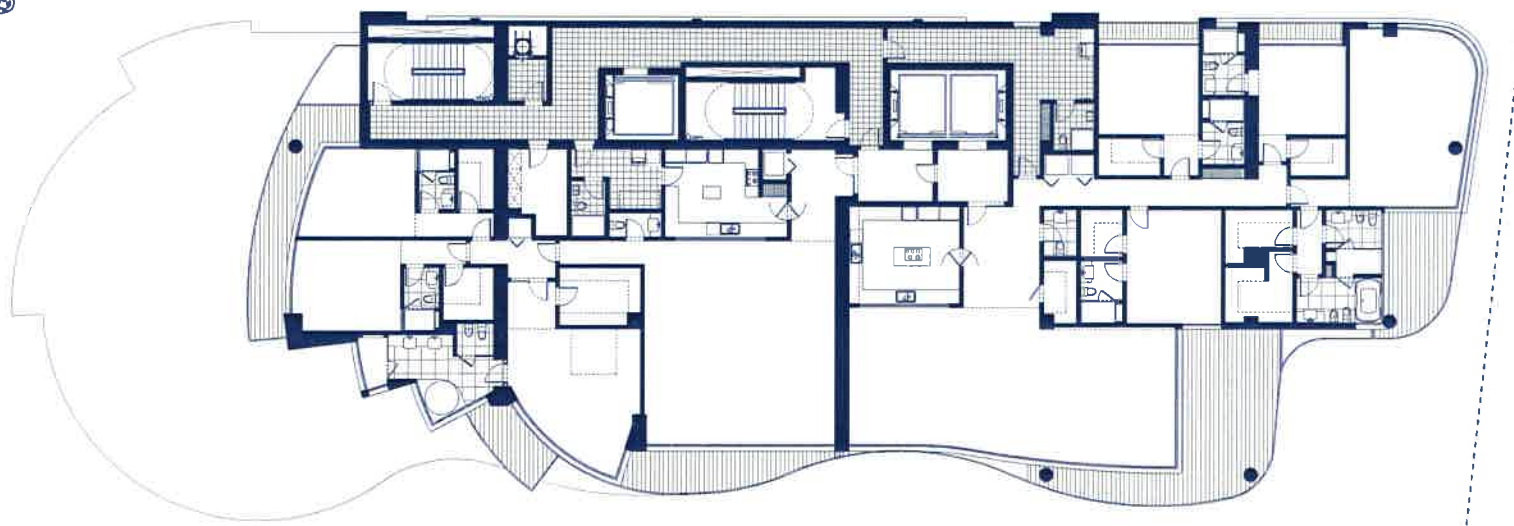
REV. 27 | 03 | 12



All dimensions are approximate and all floor plans and development plans are subject to change by the developer without notice. Stated dimensions are measured to the exterior boundaries of the exterior walls and the centerline of interior demising walls and in fact vary from the dimensions that would be determined by using the description and definition of the "Unit" set forth in the Declaration (which generally only includes the interior air space between the perimeter walls and excludes interior structural components). The seller reserves the absolute right, in its sole judgment and discretion, to substitute appliances, materials, fixtures, and equipment of equal or greater quality or value for those specified.



CHÂTEAU
BEACH RESIDENCES
SUNNY ISLES



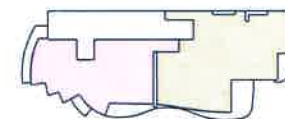
LEVEL
26° TO 31°

REV. 27 | 03 | 12



Monaco Hotel

Collins Ave.



Park

Ocean

All dimensions are approximate and all floor plans and development plans are subject to change by the developer without notice. Stated dimensions are measured to the exterior boundaries of the exterior walls and the centerline of interior demising walls and in fact vary from the dimensions that would be determined by using the description and definition of the "Unit" set forth in the Declaration (which generally only includes the interior air space between the perimeter walls and excludes interior structural components). The seller reserves the absolute right, in its sole judgment and discretion, to substitute appliances, materials, fixtures, and equipment of equal or greater quality or value for those specified.



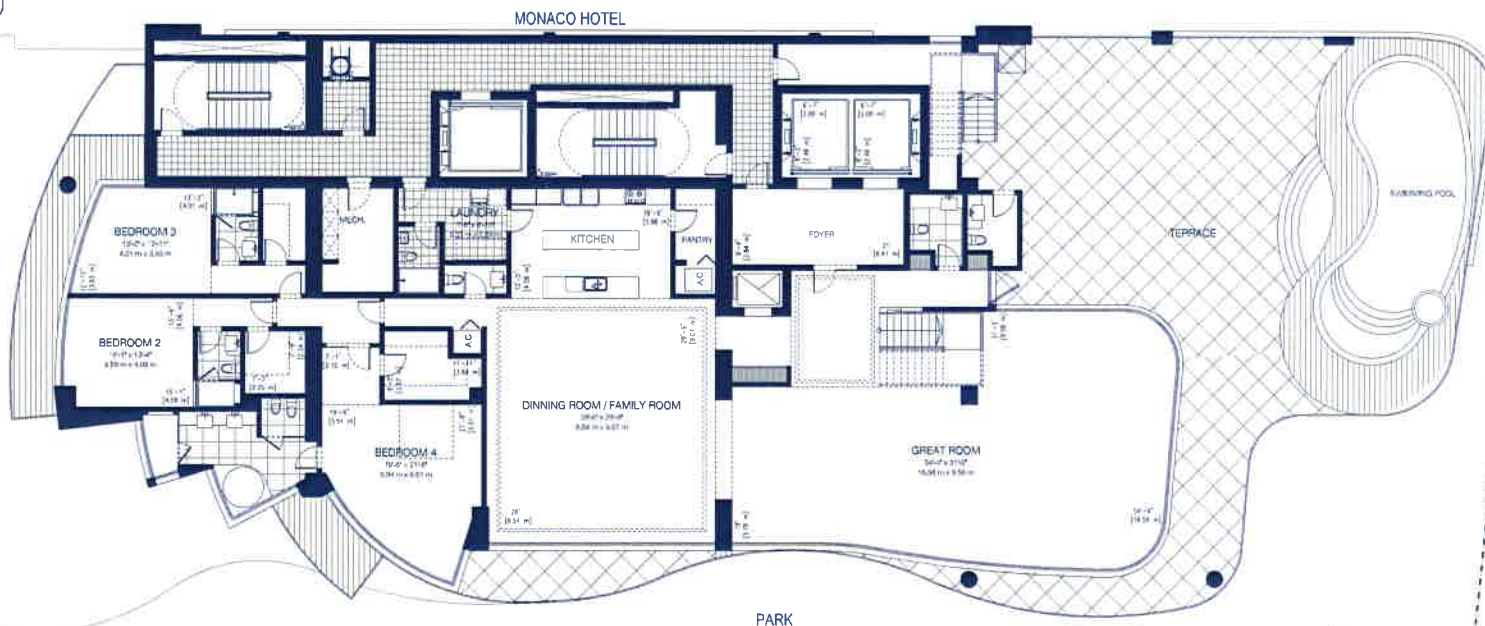
CHÂTEAU BEACH RESIDENCES

SUNNY ISLES



COLLINS AVE.

TERRACE BELOW



OCEAN

32°

PENT HOUSE VILLA



RESIDENCE COLLECTION

PENT HOUSE VILLA LEVEL 32° & 33°

4 BEDROOMS / 6 + (2) $\frac{1}{2}$ BATH

Interior: 9,300 SF 864 M²
Exterior: 4,160 SF 386 M²

Total: 13,460 SF 1250.00 M²

REV. 27 | 03 | 12



Monaco Hotel



Collins Ave.



Park

Ocean

All dimensions are approximate and all floor plans and development plans are subject to change by the developer without notice. Stated dimensions are measured to the exterior boundaries of the exterior walls and the centerline of interior demising walls and in fact vary from the dimensions that would be determined by using the description and definition of the "Unit" set forth in the Declaration (which generally only includes the interior air space between the perimeter walls and excludes interior structural components). The seller reserves the absolute right, in its sole judgment and discretion, to substitute appliances, materials, fixtures, and equipment of equal or great quality or value for those specified.

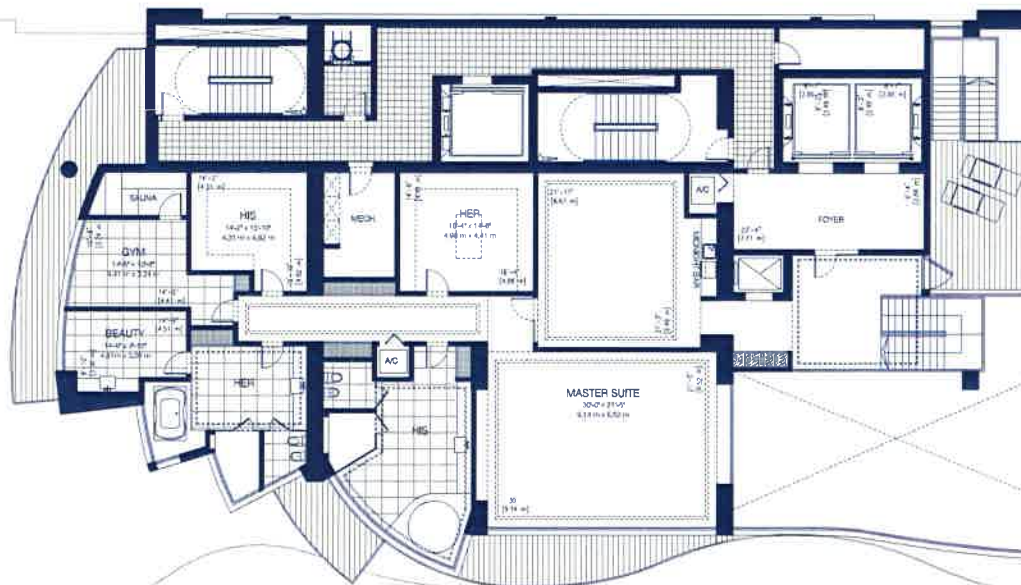


CHÂTEAU BEACH RESIDENCES

SUNNY ISLES



TERRACE BELOW



PENT HOUSE VILLA



RESIDENCE COLLECTION

PENT HOUSE VILLA LEVEL 32° & 33°

4 BEDROOMS / 6 + (2) $\frac{1}{2}$ BATH

Interior: 9,300 SF 864 M²
Exterior: 4,160 SF 386 M²

Total: 13,460 SF 1250.00 M²

REV. 27 | 03 | 12



Monaco Hotel



Collins Ave.



Park

33°

Ocean

All dimensions are approximate and all floor plans and development plans are subject to change by the developer without notice. Stated dimensions are measured to the exterior boundaries of the exterior walls and the centerline of interior demising walls and in fact vary from the dimensions that would be determined by using the description and definition of the "Unit" set forth in the Declaration (which generally only includes the interior air space between the perimeter walls and excludes interior structural components). The seller reserves the absolute right, in its sole judgment and discretion, to substitute appliances, materials, fixtures, and equipment of equal or great quality or value for those specified.